



**Sunetex**

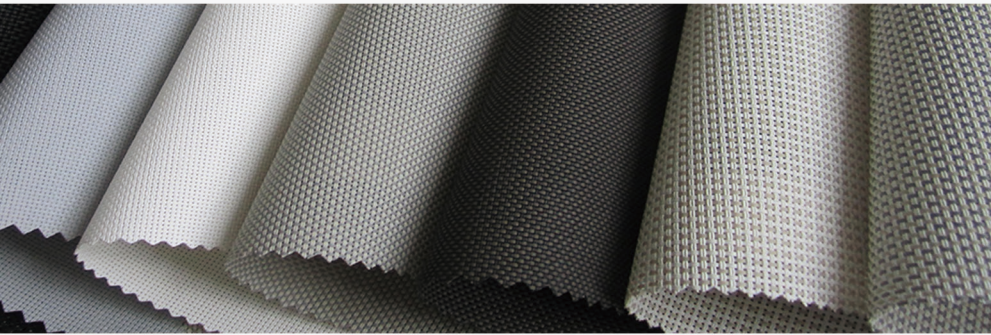
**SUNSCREEN  
FABRICS**

CLASSIC  
COLLECTION

[WWW.SUNETEX.COM](http://WWW.SUNETEX.COM)

# Sunetex

SUNSCREEN FABRIC  
CLASSIC COLLECTION



## 1000 & B1000 SERIES

1000 Series :Openness 5%

B1000 Series :Openness 3%

<b>Composition:</b>	25% Polyester & 75% PVC
<b>Finished Width:</b>	200/250/300cm
<b>Thickness:</b>	0.39mm ± 5%
<b>Standard Packing:</b>	30M
<b>Mesh Weight per m<sup>2</sup></b>	305g/m <sup>2</sup> ± 5%
<b>Mesh/In(inch):</b>	64*64
<b>Anti-Ultraviolet:</b>	95%
<b>Breaking Strength:</b>	Warp 1238N/5cm Weft 1238N/5cm
<b>Color Fastness:</b>	GRADE 5, AATCC 16-2003
<b>Fire Classification:</b>	NFPA701(USA)

<b>Composition:</b>	22% Polyester & 78% PVC
<b>Finished Width:</b>	200/250/300cm
<b>Thickness:</b>	0.52mm ± 5%
<b>Standard Packing:</b>	30M
<b>Mesh Weight per m<sup>2</sup></b>	375g/m <sup>2</sup> ± 5%
<b>Mesh/In(inch):</b>	64*54
<b>Anti-Ultraviolet:</b>	97%
<b>Breaking Strength:</b>	Warp 2078N/5cm Weft 1752N/5cm
<b>Color Fastness:</b>	GRADE 5, AATCC 16-2003
<b>Fire Classification:</b>	NFPA701(USA)



[www.sunetex.com](http://www.sunetex.com)

# Sunetex

SUNSCREEN FABRIC  
CLASSIC COLLECTION



## 1100 SERIES

Openness 5%

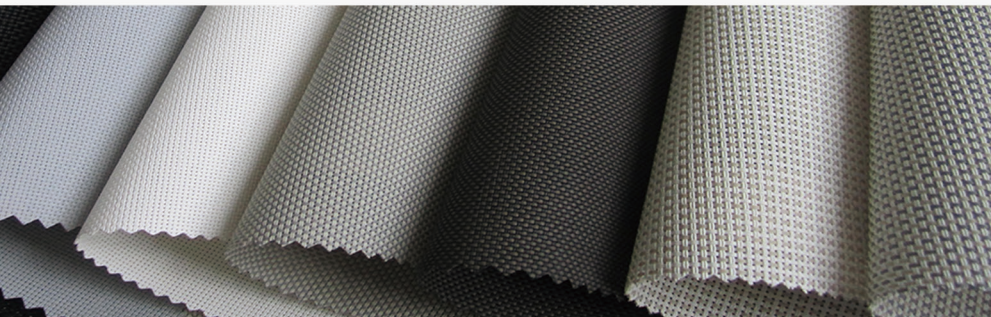
<b>Composition:</b>	29% Polyester & 71% PVC
<b>Finished Width:</b>	200/250/300cm
<b>Thickness:</b>	0.75mm $\pm$ 5%
<b>Standard Packing:</b>	30M
<b>Mesh Weight per m<sup>2</sup></b>	520g/m <sup>2</sup> $\pm$ 5%
<b>Mesh/In(inch):</b>	36*36
<b>Breaking Strength:</b>	Warp 2600N/5cm Weft 2600N/5cm
<b>Anti-Ultraviolet:</b>	95%
<b>Color Fastness:</b>	GRADE 4.5, AATCC 16-2003
<b>Fire Classification:</b>	NFPA701(USA)



[www.sunetex.com](http://www.sunetex.com)

# Sunetex

SUNSCREEN FABRIC  
CLASSIC COLLECTION



## 1200 SERIES

Openness 5%

<b>Composition:</b>	29% Polyester & 71% PVC
<b>Finished Width:</b>	200/250/300cm
<b>Thickness:</b>	0.55mm $\pm$ 5%
<b>Standard Packing:</b>	30M
<b>Mesh Weight per m<sup>2</sup></b>	410g/m <sup>2</sup> $\pm$ 5%
<b>Mesh/In(inch):</b>	48*46
<b>Breaking Strength:</b>	Warp 1600N/5cm Weft 1500N/5cm
<b>Anti-Ultraviolet:</b>	95%
<b>Color Fastness:</b>	GRADE 4.5, AATCC 16-2003
<b>Fire Classification:</b>	NFPA701(USA)

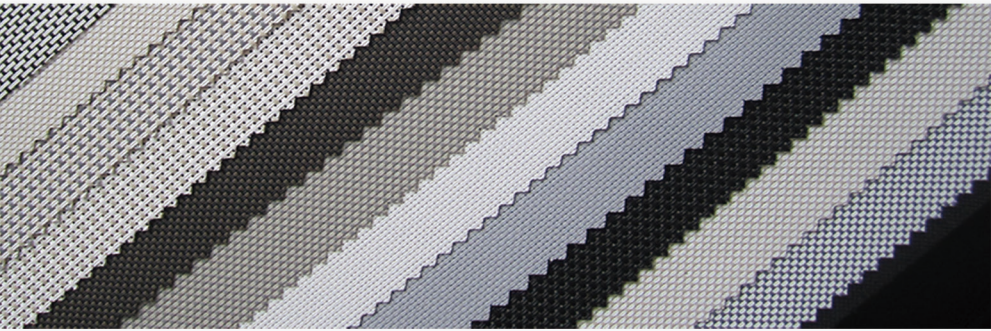


[www.sunetex.com](http://www.sunetex.com)



# Sunetex

SUNSCREEN FABRIC  
CLASSIC COLLECTION



## A1200 & B1200 SERIES

A1200 Series :Openness 1%

B1200 Series :Openness 3%

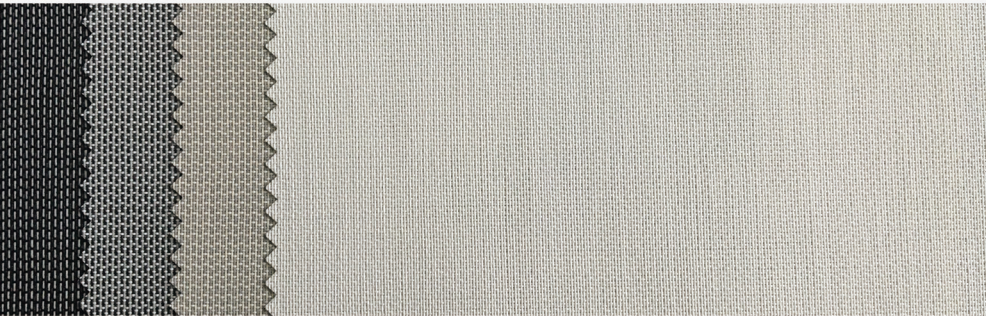
<b>Composition:</b>	29% Polyester & 71% PVC	29% Polyester & 71% PVC
<b>Finished Width:</b>	200/250/300cm	200/250/300cm
<b>Thickness:</b>	0.75mm $\pm$ 5%	0.65mm $\pm$ 5%
<b>Standard Packing:</b>	30M	30M
<b>Mesh Weight per m<sup>2</sup></b>	470g/m <sup>2</sup> $\pm$ 5%	440g/m <sup>2</sup> $\pm$ 5%
<b>Mesh/In(inch):</b>	64*40	54*44
<b>Anti-Ultraviolet:</b>	99%	97%
<b>Breaking Strength:</b>	Warp 2060N/5cm Weft 1300N/5cm	Warp1800N/5cm Weft 1434N/5cm
<b>Color Fastness:</b>	GRADE 4.5, AATCC 16-2003	GRADE 4.5, AATCC 16-2003
<b>Fire Classification:</b>	NFPA701(USA)	NFPA701(USA)



[www.sunetex.com](http://www.sunetex.com)

# Sunetex

SUNSCREEN FABRIC  
CLASSIC COLLECTION



## 1300 SERIES

Openness 3%

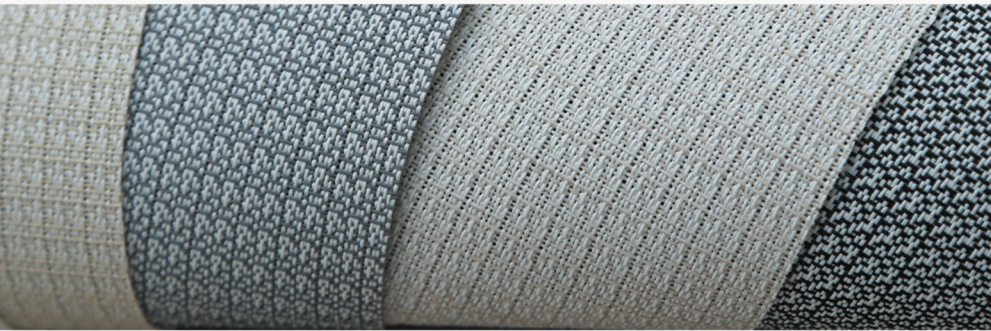
<b>Composition:</b>	29% Polyester & 71% PVC
<b>Finished Width:</b>	200/250/300cm
<b>Thickness:</b>	0.60mm $\pm$ 5%
<b>Standard Packing:</b>	30M
<b>Mesh Weight per m<sup>2</sup></b>	405g/m <sup>2</sup> $\pm$ 5%
<b>Mesh/In(inch):</b>	48*42
<b>Breaking Strength:</b>	Warp 1600N/5cm Weft 1370N/5cm
<b>Anti-Ultraviolet:</b>	97%
<b>Color Fastness:</b>	GRADE 4.5, AATCC 16-2003
<b>Fire Classification:</b>	NFPA701(USA)



[www.sunetex.com](http://www.sunetex.com)

# Sunetex

SUNSCREEN FABRIC  
CLASSIC COLLECTION



## 1400 SERIES

Openness 4%

<b>Composition:</b>	29% Polyester & 71% PVC
<b>Finished Width:</b>	200/250/300cm
<b>Thickness:</b>	0.65mm $\pm$ 5%
<b>Standard Packing:</b>	30M
<b>Mesh Weight per m<sup>2</sup></b>	420g/m <sup>2</sup> $\pm$ 5%
<b>Mesh/In(inch):</b>	50*40
<b>Breaking Strength:</b>	Warp 1600N/5cm Weft 1600N/5cm
<b>Anti-Ultraviolet:</b>	96%
<b>Color Fastness:</b>	GRADE 4.5, AATCC 16-2003
<b>Fire Classification:</b>	NFPA701(USA)

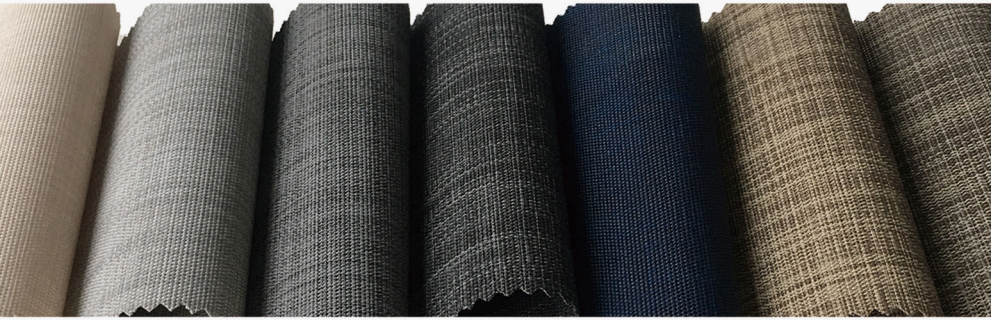


[www.sunetex.com](http://www.sunetex.com)



# Sunetex

SUNSCREEN FABRIC  
CLASSIC COLLECTION



## 1500 SERIES

Openness 5%

<b>Composition:</b>	29% Polyester & 71% PVC
<b>Finished Width:</b>	200/250/300cm
<b>Thickness:</b>	0.73mm $\pm$ 5%
<b>Standard Packing:</b>	30M
<b>Mesh Weight per m<sup>2</sup></b>	430g/m <sup>2</sup> $\pm$ 5%
<b>Mesh/In(inch):</b>	48*46
<b>Breaking Strength:</b>	Warp 1600N/5cm Weft 1500N/5cm
<b>Anti-Ultraviolet:</b>	95%
<b>Color Fastness:</b>	GRADE 4.5, AATCC 16-2003
<b>Fire Classification:</b>	NFPA701(USA)

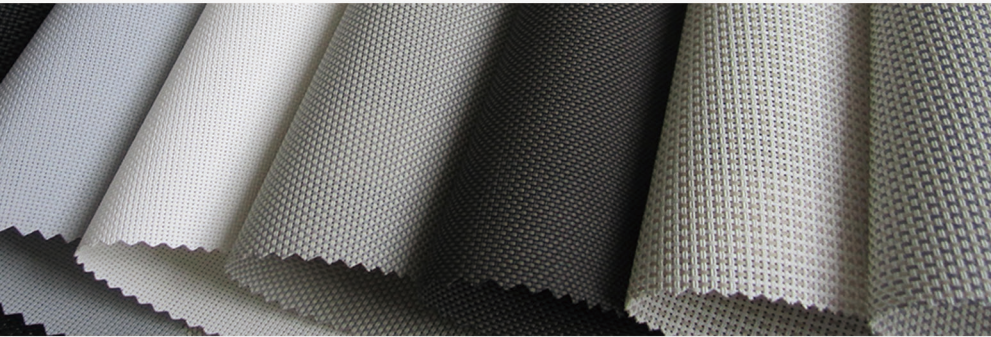


[www.sunetex.com](http://www.sunetex.com)



# Sunetex

SUNSCREEN FABRIC  
CLASSIC COLLECTION



## 1600 SERIES

Openness 5%

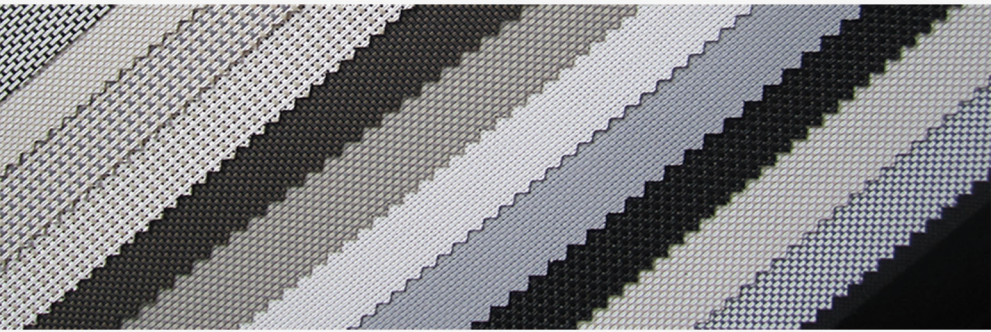
<b>Composition:</b>	18% Polyester & 66% PVC & 16% Linen
<b>Finished Width:</b>	200/250/300cm
<b>Thickness:</b>	0.55mm $\pm$ 5%
<b>Standard Packing:</b>	30M
<b>Mesh Weight per m<sup>2</sup></b>	375g/m <sup>2</sup> $\pm$ 5%
<b>Mesh/In(inch):</b>	48*46
<b>Breaking Strength:</b>	Warp 1600N/5cm Weft 1500N/5cm
<b>Anti-Ultraviolet:</b>	95%
<b>Color Fastness:</b>	GRADE 4.5, AATCC 16-2003
<b>Fire Classification:</b>	NFPA701(USA)



[www.sunetex.com](http://www.sunetex.com)

# Sunetex

SUNSCREEN FABRIC  
CLASSIC COLLECTION



## 2500 & 2600 SERIES

2500 Series :Openness 5%

2600 Series :Openness 9%

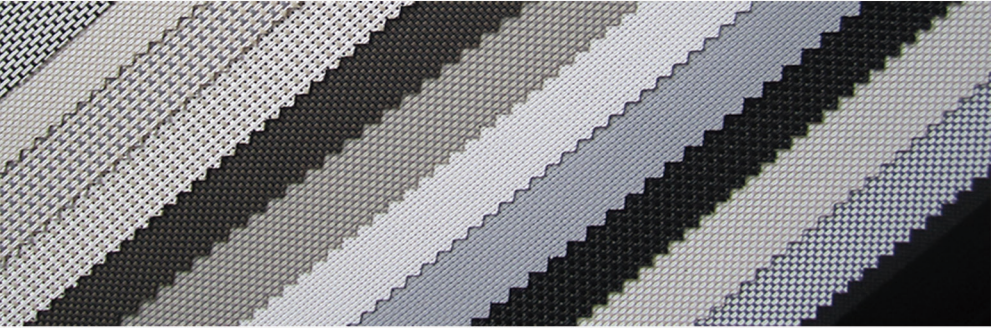
<b>Composition:</b>	29% Polyester & 71% PVC	29% Polyester & 71% PVC
<b>Finished Width:</b>	200/250/300cm	200/250/300cm
<b>Thickness:</b>	0.70mm ± 5%	0.75mm ± 5%
<b>Standard Packing:</b>	30M	30M
<b>Mesh Weight per m<sup>2</sup></b>	415g/m <sup>2</sup> ± 5%	425g/m <sup>2</sup> ± 5%
<b>Mesh/In(inch):</b>	48*42	48*46
<b>Anti-Ultraviolet:</b>	95%	91%
<b>Breaking Strength:</b>	Warp 1600N/5cm Weft 1500N/5cm	Warp 1600N/5cm Weft 1500N/5cm
<b>Color Fastness:</b>	GRADE 4.5, AATCC 16-2003	GRADE 5, AATCC 16-2003
<b>Fire Classification:</b>	NFPA701(USA)	NFPA701(USA)



[www.sunetex.com](http://www.sunetex.com)

# Sunetex

SUNSCREEN FABRIC  
CLASSIC COLLECTION



## 3000 & 4000 SERIES

Openness 3%

<b>Composition:</b>	29% Polyester & 71% PVC	
<b>Finished Width:</b>	200/250/300cm	
<b>Thickness:</b>	0.70mm $\pm$ 5%	0.60mm $\pm$ 5%
<b>Standard Packing:</b>	30M	30M
<b>Mesh Weight per m<sup>2</sup></b>	470g/m <sup>2</sup> $\pm$ 5%	400g/m <sup>2</sup> $\pm$ 5%
<b>Mesh/In(inch):</b>	36*30	48*40
<b>Breaking Strength:</b>	Warp 1600N/5cm Weft 1500N/5cm	
<b>Anti-Ultraviolet:</b>	97%	
<b>Color Fastness:</b>	GRADE 4.5, AATCC 16-2003	
<b>Fire Classification:</b>	NFPA701(USA)	

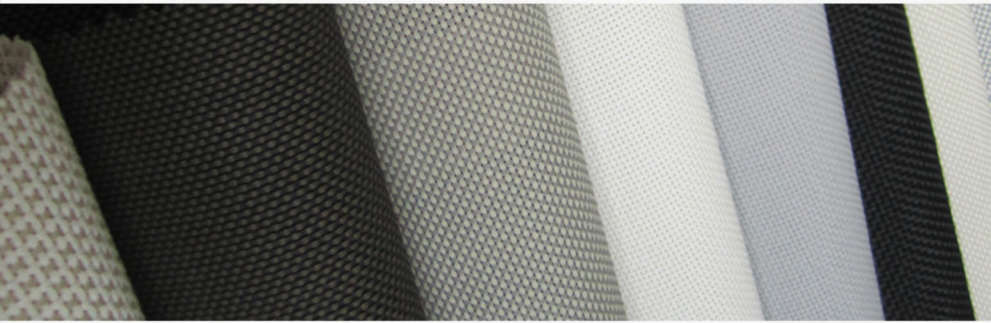


[www.sunetex.com](http://www.sunetex.com)



# Sunetex

SUNSCREEN FABRIC  
CLASSIC COLLECTION



## 5000 SERIES

Openness 1%

<b>Composition:</b>	29% Polyester & 71% PVC
<b>Finished Width:</b>	200/250/300cm
<b>Thickness:</b>	0.73mm $\pm$ 5%
<b>Standard Packing:</b>	30M
<b>Mesh Weight per m<sup>2</sup></b>	525g/m <sup>2</sup> $\pm$ 5%
<b>Mesh/In(inch):</b>	82*34
<b>Breaking Strength:</b>	Warp 2740N/5cm Weft 1200N/5cm
<b>Anti-Ultraviolet:</b>	99%
<b>Color Fastness:</b>	GRADE 4.5, AATCC 16-2003
<b>Fire Classification:</b>	NFPA701(USA)



[www.sunetex.com](http://www.sunetex.com)



# Sunetex

SUNSCREEN FABRIC  
CLASSIC COLLECTION



## 6000 SERIES

Openness 1%

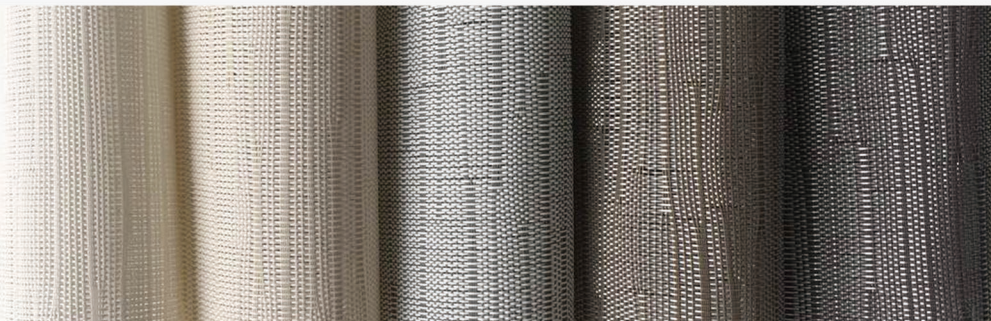
<b>Composition:</b>	25% Polyester & 75% PVC
<b>Finished Width:</b>	200/250/300cm
<b>Thickness:</b>	1.00mm $\pm$ 5%
<b>Standard Packing:</b>	30M
<b>Mesh Weight per m<sup>2</sup></b>	725g/m <sup>2</sup> $\pm$ 5%
<b>Mesh/In(inch):</b>	50*16
<b>Breaking Strength:</b>	Warp 3824N/5cm Weft 1224N/5cm
<b>Anti-Ultraviolet:</b>	99%
<b>Color Fastness:</b>	GRADE 4.5, AATCC 16-2003
<b>Fire Classification:</b>	NFPA701(USA)

 HIGH STRENGTH

[www.sunetex.com](http://www.sunetex.com)

# Sunetex

SUNSCREEN FABRIC  
CLASSIC COLLECTION



## 7000 SERIES

Openness 10%

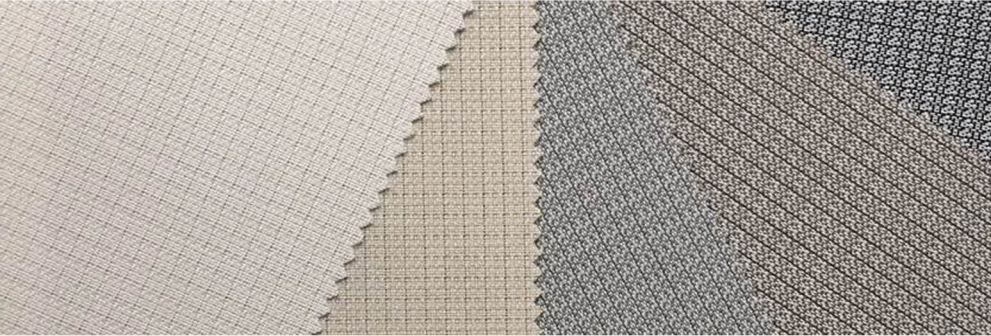
<b>Composition:</b>	29% Polyester & 71% PVC
<b>Finished Width:</b>	250/300cm
<b>Thickness:</b>	0.65mm $\pm$ 5%
<b>Standard Packing:</b>	30M
<b>Mesh Weight per m<sup>2</sup></b>	420g/m <sup>2</sup> $\pm$ 5%
<b>Mesh/In(inch):</b>	50*40
<b>Breaking Strength:</b>	Warp 2600N/5cm Weft 2600N/5cm
<b>Anti-Ultraviolet:</b>	90%
<b>Color Fastness:</b>	GRADE 4.5, AATCC 16-2003
<b>Fire Classification:</b>	NFPA701(USA)



[www.sunetex.com](http://www.sunetex.com)

# Sunetex

SUNSCREEN FABRIC  
CLASSIC COLLECTION



## 8000 SERIES

Openness 8%

<b>Composition:</b>	29% Polyester & 71% PVC
<b>Finished Width:</b>	250/300cm
<b>Thickness:</b>	0.85mm $\pm$ 5%
<b>Standard Packing:</b>	30M
<b>Mesh Weight per m<sup>2</sup></b>	430g/m <sup>2</sup> $\pm$ 5%
<b>Mesh/In(inch):</b>	50*44
<b>Breaking Strength:</b>	Warp 1670N/5cm Weft 1480N/5cm
<b>Anti-Ultraviolet:</b>	92%
<b>Color Fastness:</b>	GRADE 4.5, AATCC 16-2003
<b>Fire Classification:</b>	NFPA701(USA)

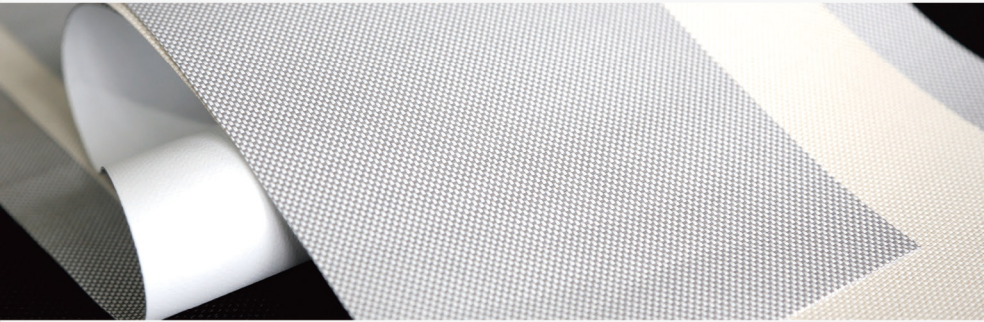


[www.sunetex.com](http://www.sunetex.com)



# Sunetex

SUNSCREEN FABRIC  
CLASSIC COLLECTION



## 9000 SERIES

Openness 0%

<b>Composition:</b>	29% Polyester & 71% PVC
<b>Finished Width:</b>	200/250/300cm
<b>Thickness:</b>	0.65mm $\pm$ 5%
<b>Standard Packing:</b>	30M
<b>Mesh Weight per m<sup>2</sup></b>	590g/m <sup>2</sup> $\pm$ 5%
<b>Mesh/In(inch):</b>	48*46
<b>Breaking Strength:</b>	Warp 1670N/5cm Weft 1480N/5cm
<b>Anti-Ultraviolet:</b>	100%
<b>Color Fastness:</b>	GRADE 4.5, AATCC 16-2003
<b>Fire Classification:</b>	NFPA701(USA)



[www.sunetex.com](http://www.sunetex.com)





**SICHUAN GROUPEVE CO.,LTD**

NO.1098,MIDDLE SECTION OF JIANNAN AVENUE,  
HIGH-TECH ZONE,CHENGDU, SICHUAN, P.R. CHINA

TEL./FAX:0086-28-8533 3329

EMAIL:info@groupeve.com

[www.sunetex.com](http://www.sunetex.com)